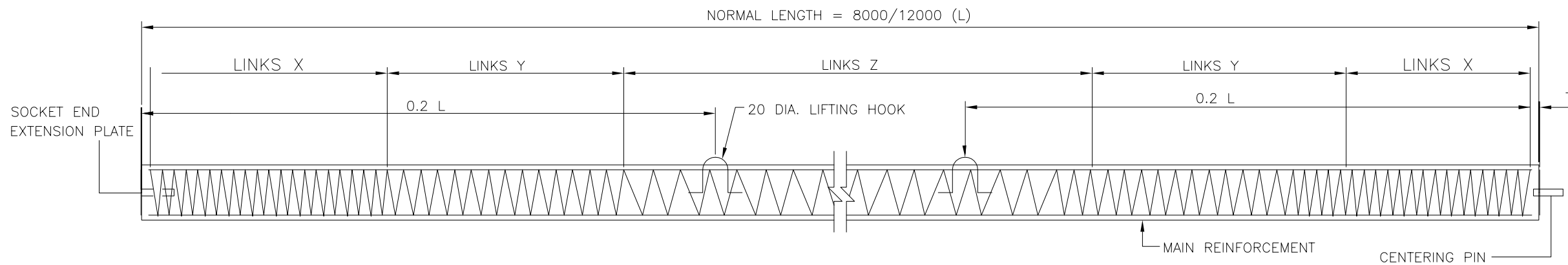
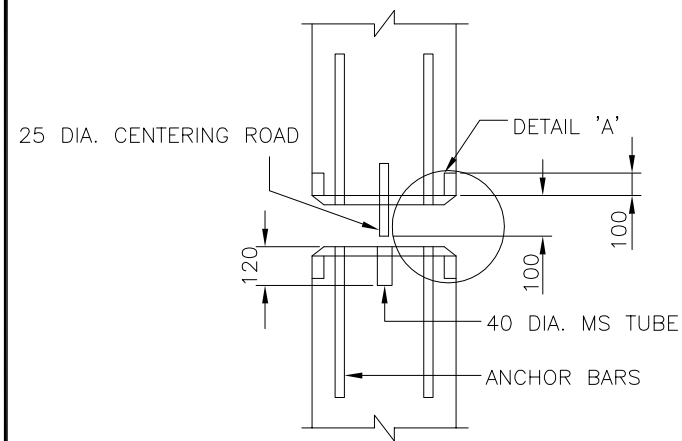


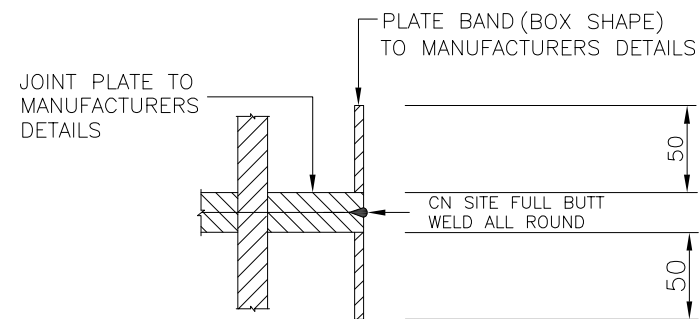
ELEVATION OF LOWER SECTION (STARTER)



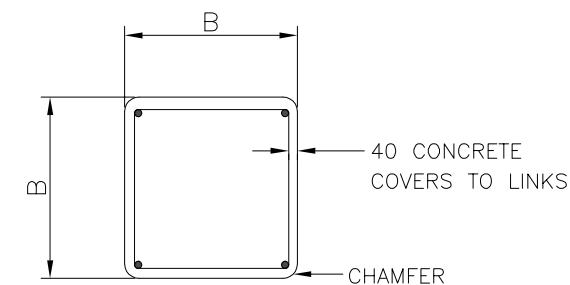
ELEVATION OF TOP SECTION (EXTENSION)



DETAIL OF PILE EXTENSION



DETAIL 'A'



TYPICAL SECTION

TABLE FOR PRECAST CONCRETE PILE		
PILE SIZE B (mm)	WORKING LOAD (TONNES)	WORK PILE TEST LOAD
150	13	1.5 TIMES WORKING LOAD
200	20	1.5 TIMES WORKING LOAD
250	25	1.5 TIMES WORKING LOAD

NOTE:

- ALL DIMENSION ARE IN MILLIMETERS UNLESS OTHERWISE STATED
- ALL PILES SHALL BE PRECAST CONCRETE PILES WITH REINFORCEMENT AS PER MANUFACTURERS DETAILS
- ALL PILES CAST ARE TO BE TRULY STRAIGHT IN SECTION.
- THE PILE SHOE IS TO BE PERFECTLY SQUARE AND ALIGNED WITH THE AXIS OF PILES.
- EXTREME CARE MUST BE EXERCISED DURING TRANSPORTING AND LIFTING. ALL PILES ARE TO BE LIFTED AT POINTS PROVIDED AS INDICATED ON THE DRAWING.
- CONCRETE MIX TO BE GRADE 45(45N<sup>2</sup>/mm AT 28 DAYS) WITH 20mm MAXIMUM SIZE CRUSHED GRANITE AGGREGATES AND CLEAN RIVER SAND.
- ALL LONGITUDINAL REINFORCEMENT TO BE HIGH YIELD STEEL (fy = 460 N<sup>2</sup>/ mm )
- ALL LINKS SHALL BE SPIRAL AND TO BE COLD DRAWN WIRES (fy = 425 N<sup>2</sup>/ mm )
- CONTRACTOR TO SUBMIT CALCULATION FOR SET IN RELATION TO HAMMER WEGHT, HAMMER DROP ETC. FOR APPROVAL BY THE ENGINEER BEFORE COMMENCING WORK
- EACH PILE INSTALLED SHALL NOT DEVIATE EXCEEDING FOLLOWING TOLERANCE  
- 1:75 FROM VERTICAL  
- 75 mm FROM DESIGNATED PILE POSITION
- TEST LOAD FOR EACH PILE SHALL BE 1.5 TIMES THE WORKING LOAD.
- ALL PILES SHALL BE DRIVEN BY DIESEL HAMMER OR OTHER APPROVED HAMMER WITH SUFFICIENT ENERGY TO DRIVE TO THE SPECIFIED LOAD WITHOUT DAMAGING THE PILES.
- SPlicing SHALL BE CARRIED OUT BY SITE WELDING SO THAT THE EXTENSION PILE AND INITIAL PILE WILL BE "SQUARE" AND IN ONE STRAIGHT LINE BEFORE WELDING PROCEEDS. ANY ROUGHNESS AND UNEVENNESS ON CONTACT PLATES CAUSED BY THE HAMMER SHALL BE REMOVED BY GRINDING.
- ALLOWABLE CRACKS IN RC PILES SHALL BE IN ACCORDANCE WITH BS 5400 : PART 4 : 1984. THE MAXIMUM CRACK WIDTH SHALL NOT EXCEED 0.25
- PLATE BAND SHALL BE COATED WITH 2 COATS QUICK SETTING COAL EPOXY

REV.	REVISED BY	DESCRIPTION	DATE
01	NORAZLIN	CHANGE LOGO	JAN 2018

**Ranhill SAJ**  
SAJ Ranhill Sdn. Bhd. (476718-H)  
Jalan Garuda, Larkin, P.O Box 262,  
80350 Johor Bahru, Johor, Malaysia  
T\_+607 - 224 4040 F\_+607 - 224 0033  
1800-98-7474 sms 019-772 7474 www.sajranhill.com.my customer.care@saj.com.my

PROJECT :	
DRAWING TITLE :	
DETAILS OF PRECAST R.C.PILE	
DRAWN BY : MAZZ	DESIGNED : W.C
CHECKED : MFB	APPROVED : T.C
SCALE : NOT TO SCALE	DATE : JAN 2018
DRAWING NO : SAJ/STD/RCP/01 (01)	