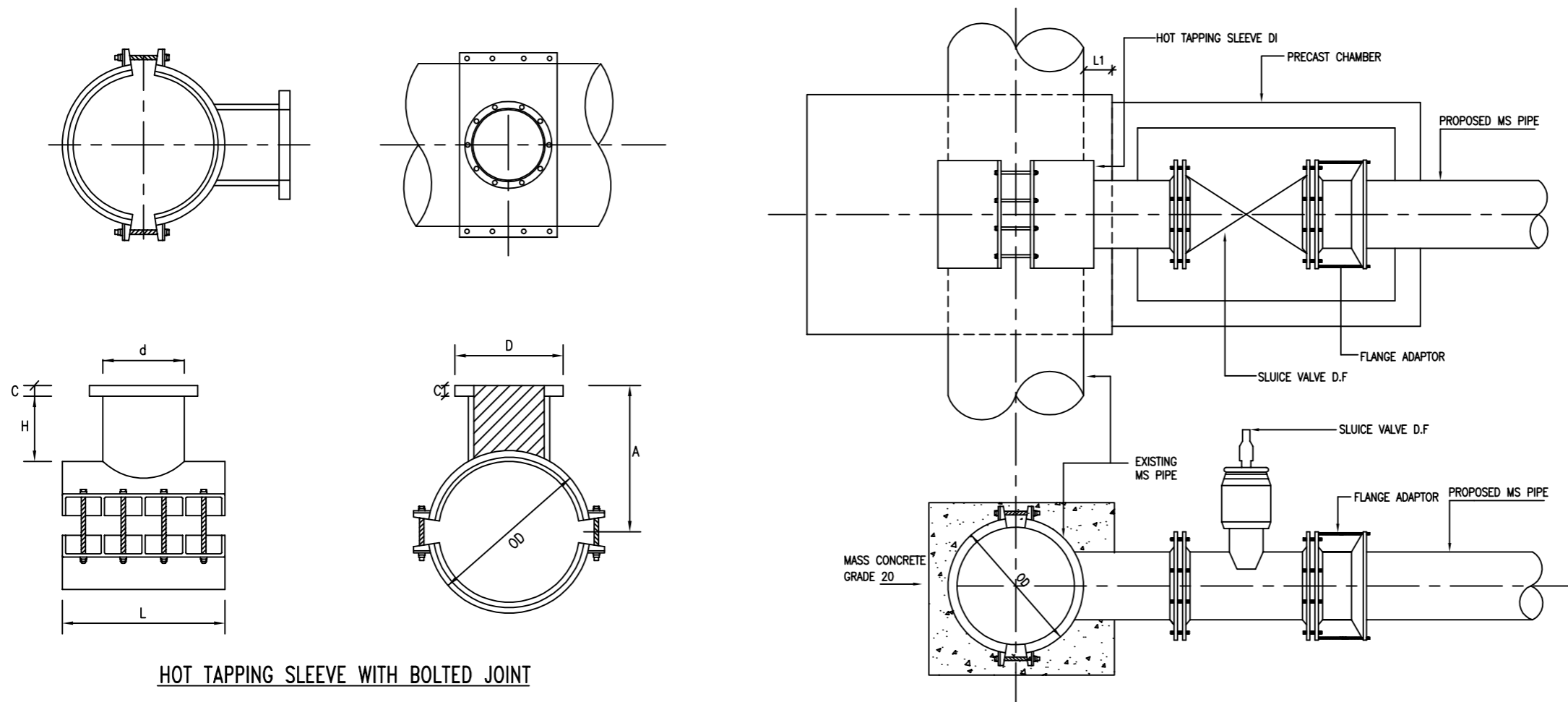


NOTE :

1. L1 = 1/2 DIA.PIPE



HOT TAPPING SLEEVE WITH BOLTED JOINT

TABLE :

NORMAL SIZE (mm)	NO.OF PER SET SET	NOMINAL SIZE OF BOLT	WIDTH ACROSS FLATS (mm)		WASHER FACE DIAMETER,min (mm)	THICKNESS OF WASHER,max (mm)
			Max.	Min.		
100	8	M16	24	23.16	22.0	0.8
150	8	M20	30	29.16	27.7	0.8
200	8	M20	30	29.16	27.7	0.8
250	12	M20	30	29	27.7	0.8
300	12	M20	30	29	27.7	0.8
350	16	M20	30	29	27.7	0.8
400	16	M24	36	35	33.2	*
450	20	M24	36	35	33.2	*
500	20	M24	36	35	33.2	0.8
600	20	M27	41	40	*	0.8

1. Size > 600 mm refer to specification SAJ OT/HT/001
2. * For other sizes of washer shall be provided by the manufacturer.

REV.	REVISED BY	DESCRIPTION	DATE
01	NORAZLIN	CHANGE LOGO	JAN 2018
01	NORAZLIN	MORE DETAIL MAKE IT TWO DRAWINGS	



Ranhill SAJ
 SAJ Ranhill Sdn. Bhd. (476718-H)
 Jalan Garuda, Larkin, P.O Box 262,
 80350 Johor Bahru, Johor, Malaysia
 T_+607-224 4040 F_+607-224 0033
 1800-88-7474 sms 019-772 7474 www.sajranhill.com.my customer.care@saj.com.my

PROJECT :
SLEEVE WITH BOLTED JOINT

DRAWING TITLE :
 DETAILS OF HOT TAPPINGS

DRAWN BY : MYR	DESIGNED : W.C
CHECKED : MFB	APPROVED : T.C
SCALE : NOT TO SCALE	DATE : JAN 2018
DRAWING NO : SAJ/STD/HT/02	