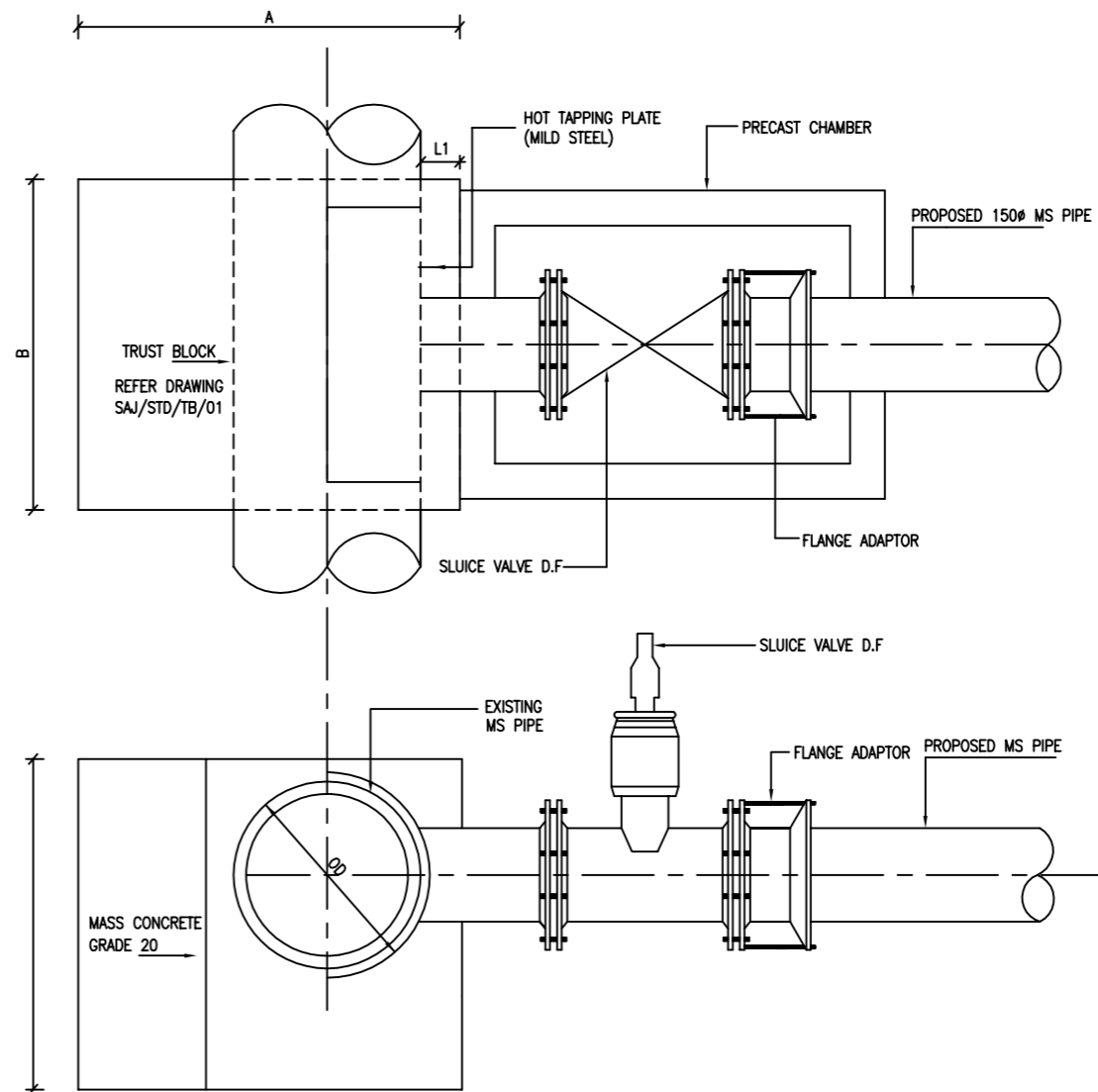


HOT TAPPING SLEEVE WITH WELDED JOINT



HOT TAPPING WITH COMPENSATION PLATE

d = DN for short piece/branch
 w = D, DN for existing MS pipe
 L = length of plate
 t = thickness of plate
 T = thickness of pipe line

Formula :

$L = 2d \text{ to } 3d$

$S = \pi D / 2$

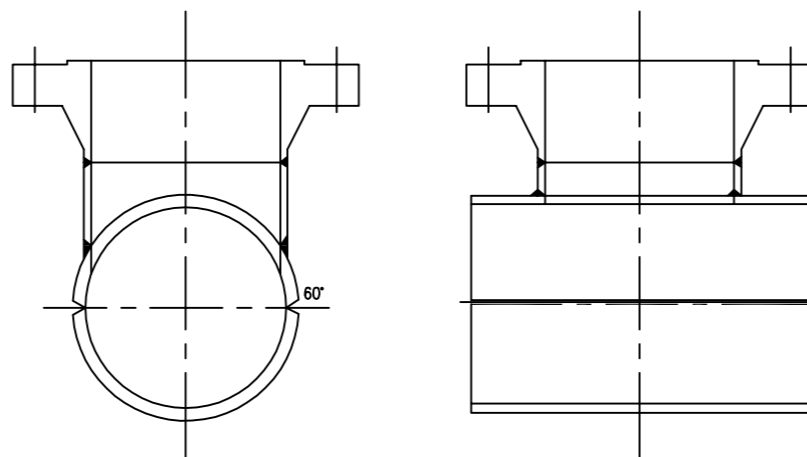
$0.5 \leq d/D \leq 1.00$ - split sleeve

$d/D \leq 0.50$ - compensation plate

$t = T (> 6.4 \text{ mm})$

or any greater than thickness of pipe

Maximum Working Pressure : 16 Bar (PN16)



SPLIT TEE/SLEEVE

NOTE :

- 1. L1 = 1/2 DIA.PIPE
- 2. DETAIL TRUST BLOCK REFER DWG.NO:SAJ/STS/TB 02

REV.	REVISED BY	DESCRIPTION	DATE
01	NORAZLIN	CHANGE LOGO	JAN 2018
01	NORAZLIN	MORE DETAIL MAKE IT TWO DRAWINGS	

Ranhill SAJ

SAJ Ranhill Sdn. Bhd. (476718 - H)
 Jalan Garuda, Larkin, P.O Box 262,
 80350 Johor Bahru, Johor, Malaysia
 T_+607-224 4040 F_+607-224 0033
 1800-88-7474 sms 019-772 7474 www.sajranhill.com.my customer.care@saj.com.my

PROJECT :

SLEEVE WITH WELDED JOINT

DRAWING TITLE :

DETAILS OF HOT TAPPINGS

DRAWN BY : MYR	DESIGNED : W.C
CHECKED : MFB	APPROVED : T.C
SCALE : NOT TO SCALE	DATE : JAN 2018
DRAWING NO : SAJ/STD/HT/01(01)	